

The



Complete



Häfele





1



Furniture handles, wardrobe hooks
Product group 1

Further Häfele product ranges

Architectural Hardware



Dialock System Components



Consumables and Tools, protective clothing



2

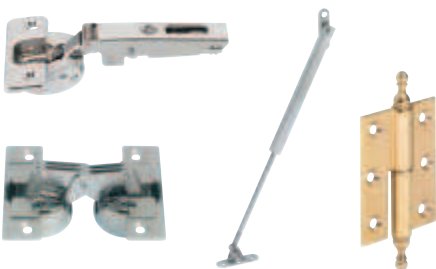
ixconnect



Connectors, lightweight panel fittings, shelf supports..... 2.1

Contents	2.14	Connecting screws	2.101
Lightweight panel fittings	2.18	Wooden dowels and biscuits	2.106
RTA connectors	2.27	Connecting brackets	2.108
RTA and shelf connectors	2.63	Bed connectors	2.112
Rear panel connectors	2.84	Shelf supports	2.116
Worktop connectors	2.86	Shelf supports	2.127
Universal connectors	2.88	Brackets	2.136

3



Hinges, flap fittings 3.1

Contents	3.2	Flap fittings	
Concealed hinges		Contents	3.115
– Duomatic	3.8	Smuso gentle closing	
– Metallamat, Metalla	3.50	– Stay flap fitting	3.118
Futura drilling and insertion machine	3.71	– Double flap lift up fitting	3.122
Concealed hinges with exposed axle		– Swin up front fitting	3.126
– Aximat	3.81	– Parallel lift up front fitting	3.129
Furniture hinges	3.89	Lid stays	3.138
Rolled hinges	3.93	Flap stays	3.154
		Dampers and buffers	3.167

4

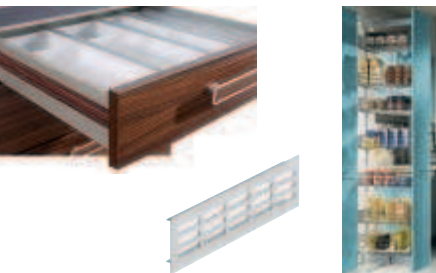
dia-lock



Locking systems, locks, catches, safes 4.1

Contents	4.6	Decorative keys	4.75
Dialock electronic locking system for furniture	4.10	Cam locks	4.79
Symo, locking systems with cylinder removable cores	4.30	Central locking systems	4.82
Push-Lock furniture locking system	4.60	Push-button cylinders	4.89
Espagnolette locks	4.68	Locker and coin return locks	4.90
Rim locks	4.72	Glass door locks	4.100
Mortise locks	4.74	Padlocks	4.101
		Magnetic catches	4.108
		Catches	4.125
		Safes	4.134

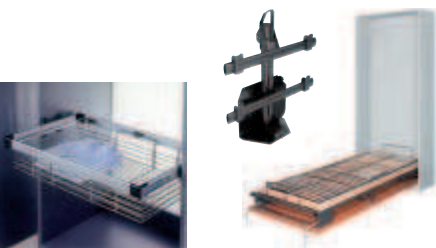
5



Kitchen fittings and accessories..... 5.1

Contents	5.4	Star wall chimney hood	5.65
Moovit drawer side runner system	5.12	LCD kitchen/bathroom DVD/TV/radio	5.65
Fittings for kitchen cabinets	5.34	Refrigerators	5.66
Waste bins	5.48	Sinks	5.67
Ironfix ironing boards	5.53	Midway systems	5.68
Hooks and holders	5.56	Breakfast bar supports	5.72
Built-in shelves	5.62	Fixing material for kitchen cabinets	5.75
Scoops	5.63	Ventilation trims and grills	5.82
Drainer grills	5.64	Aluminium frame constructions	5.103

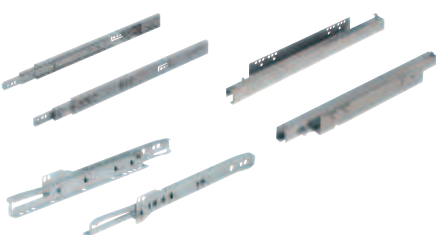
6



Living room, bedroom, bathroom, storage equipment..... 6.1

Contents	6.5	Lift systems for plasma and	
Accessories for wardrobes	6.6	LCD screens	6.45
Bed frame fittings	6.28	Aluminium wall system	6.54
Foldaway beds fittings	6.31	Ladders	6.62
Fittings for TV and hifi cabinets	6.39	Bathroom fittings and accessories	6.73

7



Drawer runners, sliding and pull-out cabinet runners 7.1

Contents	7.2	– Stainless steel ball bearing runners	7.43
For drawers and shelves		– Aluminium ball bearing runners	7.44
– Guide rails	7.9	Accessories	
– Concealed runners	7.10	– for drawer runners	7.45
– Roller runners	7.12	– Smuso gentle closing	7.50
– Stainless steel roller runners	7.20	Sliding and pull- out cabinet runners	7.52
– Ball bearing runners	7.24		



Sliding door fittings, tambour doors..... 8.1

Contents 8.4

Sliding door fittings for

- wooden doors 8.8
- glass doors 8.57

Soft closing systems 8.52

Sliding door fittings for frame doors,

- made of aluminium 8.68
- room-high 8.76

Sliding door fittings for

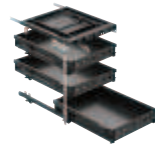
- wooden folding sliding doors 8.90
- pivot sliding doors 8.100

Aluminium tambour doors 8.106

- ready to install module 8.112
- motor drive 8.114
- counterbalancing mechanisms 8.115

8

Officys



Office equipment..... 9.1

Contents 9.10

Office furniture drawer systems

- Variant CE 9.13
- Variant SE/SVE 9.23
- Variant D 9.30

Documentary and cash trays 9.32

Idea desking system

- RTG 9.36
- Idea 9.38
- Motion 9.40

Alto desking system 9.43

Desktop organisation 9.44

- Computer holders 9.47
- Monitor supports 9.49
- Extensions 9.60

9



Furniture feet, castors, table fittings, frames..... 10.1

Contents 10.2

Furniture feet 10.5

Furniture glides 10.22

Plinth adjusters 10.33

Castors 10.47

Table fittings 10.62

Table legs 10.79

Table frames and bases 10.92

10



Shopfitting systems, wall, ceiling and floor systems..... 11.1

Contents 11.8

Shopfitting systems

- Display 150 11.10
- Shoptec 11.16
- Single 11.35
- System drawer 11.60
- Panel mounting systems 11.37

Raised floor bearing systems 11.39

Pharmacy systems

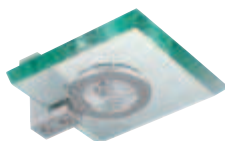
- Ratio-Pharm 11.40
- Pharma-Org 11.48

Bar railing system 11.67

Gallery rail system 11.78

Mounting aids and maintenance 11.80

11



Lighting..... 12.1

Contents 12.7

LED lights, 12 V

- Recess mounted lights 12.10
- Down lights 12.13
- Surface mounted lights 12.16
- Modular systems 12.18
- Power supply units 12.24

Halogen lights, 12 V

- Recess mounted lights 12.26
- Down lights 12.30
- Surface mounted lights 12.31

Halogen lights, 12 V

- Modular systems 12.36
- Transformers 12.38

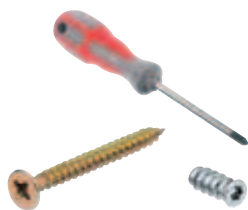
Lights 230 V

- Recess mounted lights 12.41
- Down lights 12.44
- Surface mounted lights 12.49
- System lights 12.51

Switches, sockets 12.54

Bathroom lights 12.63

12



Glass gluing technique, screws, tools..... 13.1

Contents 13.2

Glass gluing technique

- Consumables 13.14
- Processing aids 13.19

Fixing screws

- Hospa 13.21
- Drilling screws 13.34
- Varianta 13.37

Cover caps 13.43

Hexagon nuts to DIN 13.47

Wall fixings 13.51

Sleeves 13.58

Workshop equipment 13.62

Safety equipment 13.86

13

Indexes



Index by product type, in alphabetical order
..... see appendix, page A.0



Index by catalogue number with page reference
..... see appendix, page A.26

Colour variants colour reference table on last page

Everything from one source



Sibylle Thierer, Managing Director

The design of furniture and furnishings is evolving continuously. In order to stay competitive and keep pace with an ever accelerating marketplace, manufacturers have to be actively engaged in the evolution of product and design trends. And so is Häfele. In response to the dynamics of an ever-changing market, we are constantly developing innovative furniture fittings and hardware solutions and updating our product range. High-tech, lightweight furniture is just one of the emerging trends and Häfele has developed a comprehensive assortment of lightweight panel fittings that we are proud to introduce worldwide in this edition of “The Complete Häfele” catalogue.

We embrace new ideas to develop and manufacture high quality, user-friendly products in our 5 manufacturing plants, resulting in “Made in Germany” fittings and hardware technology.

However, we are not just interested in new technology and new trends. It is our goal to provide you with a comprehensive product range that meets all of your unique requirements – be it for industrial mass-produced furniture or custom 5-star hotel rooms. We provide you with the solutions that will help you develop and accelerate your own business. And this commitment goes well beyond any individual product.

Specific end user requests also challenge the hardware industry to address their unique requirements: End users demand specific benefits and value from furnishings and furniture, they demand optimal functionality. And hardware technology plays a leading role, because this is exactly what it is designed to provide, optimal functionality.

As a partner to the international furniture industry and trade, we provide a complete range of fittings and hardware from a single source, quickly and reliably, from stock.


Take advantage of these benefits and stay ahead of the competition.

Sibylle Thierer



The quickest way to the product you are looking for

If you are not looking for anything specific: Search using the table of contents


1. Table of contents  Pages V.0 + V.1

↓



2. Contents for the respective product group


Colour	Product group	Contents
1	Furniture handles, wardrobe hooks	See separate catalogue
2	Connectors, lightweight panel fittings, shelf supports	2.1 – 2.144
3	Hinges, flap fittings	3.1 – 3.170
4	Locking systems, locks, catches, safes	4.1 – 4.134
5	Kitchen fittings and accessories	5.1 – 5.110
6	Living room, bedroom, bathroom, storage equipment	6.1 – 6.78
7	Drawer runners, sliding and pull-out cabinet runners	7.1 – 7.56
8	Sliding door fittings, tambour doors	8.1 – 8.115
9	Office equipment	9.1 – 9.62
10	Furniture feet, castors, table fittings, frames	10.1 – 10.98
11	Shopfitting systems, wall, ceiling, floor systems	11.1 – 11.80
12	Lighting	12.1 – 12.66
13	Fixing material, glass gluing fittings, tools	13.1 – 13.89




↓

3. Application matrix  See tables of contents
For various products

If you are looking for something specific: Search by keyword or catalogue number

Index by product type	 Index in appendix, page A.0
Index by catalogue number	 Index in appendix, page A.26
Colour reference table	On last page of catalogue

TecServices  **Tec-Services** The symbols mark items for which the relevant support can be called up: www.hafele.com

 **GAEB** Tender texts  **CAD** CAD drawings  Installation instructions

Häfele – Finding better ways

There are many special product ranges with a great deal of innovative character under the umbrella of the Häfele brand:



Perfect connections

The Ixconnect brand covers an extremely wide and deep range of connectors and lightweight panel fittings. Using the right fittings makes furniture manufacture considerably easier. We give you advice about the suitable fitting for your furniture in an integrated way and with considerable technical expertise – regardless of whether it is flat packed furniture or custom-made designer furniture. The lightweight construction options with Ixconnect are completely new.

Connectors and lightweight panel fittings: Product group 2



High-tech for modern equipment

Dialock, the electronic locking system from Häfele, helps you to transport your customers to the world of tomorrow. Opening and closing discreetly and without contact – providing optimum functionality in many project areas such as shops, hotels, banks, laboratories and offices. User access authorisations can also be set up using the key, an innovation with which you can surprise your customers. Find out about Dialock – it is extremely easy to process.

Electronic locking systems: Product group 4



Living comfort in all walks of life

Life is extremely comfortable for young and old with Vitaflex products. In an age of increasing needs and the urge for individuality, the demand for sophisticated hardware solutions is also on the increase. We have created a product range that can considerably improve the comfort of equipment and furniture. We have marked the relevant pages with the Vitaflex logo. These products are also extremely suitable for use in barrier-free environments.

Comfortable living: Vitaflex products are marked with the Vitaflex logo on the catalogue pages



Office equipment

Officys is our special range of modern office equipment from a single source. As a developer and manufacturer of built-in office furniture systems, we provide innovative solutions that are mature down to the finest detail, such as the Idea Motion desking system with height adjusting facility.

Office equipment: Product group 9



Made-to-measure products and services

The Topco service makes it possible for you to conveniently order ready-made components for immediate installation in furniture and equipment – even from a quantity of one. Made-to-measure aluminium frame doors, for example.

Made-to-measure products: Topco products are marked with the Topco logo on the catalogue pages

Häfele added value

How to reap the benefits of our services:



Global connections

Häfele provides you with a product range containing more than 100,000 catalogued products from stock, and can also procure special fittings via its international contact network if necessary. Häfele therefore provides you with the right hardware solution for any need or requirement.



Round the clock ordering

The Internet is today's form of communication. For this reason we have developed easy link – the convenient Häfele Internet service. You can choose your products online and also obtain the latest information about prices and availability – round the clock, seven days a week. And you can order whenever you like.

e@sy link



Economic planning and construction

Häfele Tec Services provide you with a facility for downloading tender texts, CAD data, construction plans, installation and operating instructions and much more on the Internet. If you have complex hardware systems, Tec Services CAD contains a configuration tool for detailed furniture planning. Tec Services can be called up at any time at www.hafele.com.



We provide reliable logistics

Be it “just in time” or delivery to different destinations – we ensure that your delivery reaches its destination quickly and reliably. If you require special packaging or labelling for your hardware, our packaging engineers will find the best solution.

TecServices



Black Forest headquarters



Häfele, which was established in 1923, is now an internationally oriented family-run company based in the German town of Nagold. Häfele supplies the furniture industry, the building trade and the trade with furniture fittings, architectural hardware and electronic locking systems in more than 150 countries, Häfele also assists planners and investors with a professional project service.

If Häfele is not represented in your country, you will find the right contact in our main export department:

Main export department

Häfele GmbH & Co KG, Adolf Häfele Str. 1, D-72202 Nagold

Phone: +49 (0)7452 / 95 - 310, Fax: +49 (0)7452 / 95 - 305, Email: info@hafele.com

Häfele – The entire world of hardware

Delivery from the warehouse

Häfele has a gigantic main warehouse at its headquarters in Nagold and also has regional warehouses in 32 countries. Our customers are therefore efficiently supplied on site at all times.



Development and production

Häfele develops and manufactures exclusively in Germany. Sophisticated products are manufactured by Häfele in five different locations that are used in furniture, kitchens, office furniture and project furnishings. With many innovative product developments, Häfele has become the technological trendsetter for the furniture industry.



Häfele near you

«On site» is our motto. As well as our headquarters in Nagold we now have more than 40 national companies and a globally organised sales network – all looking after the special needs of our customers in the respective markets. You can also experience Häfele products live in many showrooms and at international exhibitions.



Europe

Headquarters Germany

Häfele GmbH & Co KG
72202 Nagold
Phone +49 (0)74 52 / 95-0
Fax +49 (0)74 52 / 95-2 00
info@haefele.de

Austria

Häfele Austria GmbH
5322 Hof bei Salzburg
Phone +43 (0)62 29 / 3 90 39-0
Fax +43 (0)62 29 / 3 90 39-30
info@haefele.at

Belgium

Häfele Belgium N. V.
9240 Zele
Phone +32 (0)52 / 45 01 14
Fax +32 (0)52 / 45 01 51
info@haefele.be

Croatia

Häfele GmbH & Co KG
Podružnica Zagreb
10090 Zagreb
Phone +38 51 / 3 43 57 40
Fax +38 51 / 3 43 57 41
info-croatia@haefele.com

Czech Republic & Slovakia

Häfele Czech & Slovakia s.r.o.
14 300 Praha 4
Phone +42 02 41 09 50 00
Fax +42 02 41 09 50 01
info.cz@haefele.de

Denmark

Häfele Danmark A/S
7800 Skive
Phone +45 97 / 51 15 22
Fax +45 97 / 51 12 13
info@haefele.dk

Finland

Häfele GmbH & Co KG
Sivuliike Suomessa
15200 Lahti
Phone +3 58 (0)3 / 8 77 77-0
Fax +3 58 (0)3 / 8 77 77-88
info@haefele.fi

France

Häfele France s.à.r.l.
95157 Taverny Cédex
Phone +33 (0)1 / 30 40 54 50
Fax +33 (0)1 / 30 40 54 61
info@haefele.fr

Great Britain

Häfele U.K. Ltd.
Rugby, Warks. CV211RD
Phone +44 (0)17 88 / 54 20 20
Fax +44 (0)17 88 / 54 44 40
info@haefele.co.uk

Greece

Häfele GmbH & Co KG
Information Office
15124 Maroussi
Phone +30 2 10 / 6 17 95 44
Fax +30 2 10 / 6 17 95 45
info@haefele.gr

Hungary

Häfele GmbH & Co KG
Magyarországi Kereskedelmi
1132 Budapest
Phone +36 (0)1 / 2 25 34 14
Fax +36 (0)1 / 2 02 01 82
info-hungary@haefele.com

Ireland

Häfele Ireland Ltd.
Kilcoole, Co. Wicklow
Phone +3 53 (0)1 / 2 87 34 88
Fax +3 53 (0)1 / 2 87 35 63
info@haefele.ie

Italy

Häfele Italia s.r.l.
20823 Lentate s.S. (MB).
Phone +39 03 62 / 57 74-1
Fax +39 03 62 / 57 74-4 77
info@haefele.it

Poland

Häfele Polska Sp. z o.o.
55-090 Długoleka
Phone +48 (0)71 / 3 15 32 42
Fax +48 (0)71 / 3 15 32 62
info@haefele.pl

Portugal

Häfele GmbH & Co KG
Escritorio de Vendas Portugal
4465-671 Leça de Balio
Phone +3 51 (0)22 / 9 47 55 96
Fax +3 51 (0)22 / 9 48 15 74
info-portugal@haefele.com

Romania

Häfele Romania S.R.L.
RO-300562 Timișoara
Phone +40 (0)2 56 / 30 61 72
Fax +40 (0)2 56 / 30 61 73
info@haefele.ro

Russia

Häfele Rus OOO
MKAD 14. km, Building 10
109429 Moscow
Phone +7 (495)7 87 / 07 85
Fax +7 (495)7 87 / 07 84
info@haefele.ru

Serbia

Häfele Serbia d.o.o.
22330 Nova Pazova
Phone +3 81 22 / 32 55 55
Fax +3 81 22 / 32 59 99
info-serbia@haefele.com

Spain

Häfele Herrajes España S.L.
28923 Alcorcón-Madrid
Phone +34 91 / 6 44 80 21
Fax +34 91 / 6 44 80 28
info@haefele.es

Sweden

Häfele GmbH & Co KG
Tyskland Fällial Sverige
55303 Jönköping
Phone +46 (0)46 36 / 18 00 88
Fax +46 (0)46 36 / 18 00 99
info@haefele.se

Switzerland

Häfele Schweiz AG
8280 Kreuzlingen
Phone +41 (0)71 / 6 86 82 20
Fax +41 (0)71 / 6 86 82 82
info@haefele.ch

The Netherlands

Häfele Nederland BV
7333 NZ Apeldoorn
Phone +31 (0)55 / 5 38 46 00
Fax +31 (0)55 / 5 42 49 50
info@haefele.nl

Turkey

Häfele San. ve Tic. A.Ş.
34776, Ümraniye, İstanbul
Phone +90 (0)2 16 / 5 28 59 00
Fax +90 (0)2 16 / 5 28 59 30
info@haefele.com.tr

Ukraine

Häfele Ukraine LLC
80362 Kyykiv
Zhovkva District, Lviv Region
Phone +3 80 32 2 35 15 59
Fax +3 80 32 2 35 15 60
info@haefele.com.ua

Africa

South Africa

Häfele South Africa (Pty) Ltd
Honeydew 2040
Phone +27 (0)11 / 7 96 81 00
Fax +27 (0)11 / 7 94 14 90
info@haefele.co.za

America

Argentina

Häfele Argentina S.A.
B1611GFG-Don Torcuato -
Buenos Aires
Phone +54 (0)11 / 63 47 26 00
Fax +54 (0)11 / 63 47 26 26
info@haefele.com.ar

Brazil

Häfele Brasil Ltda.
Piraquara-Paraná, CEP: 83302-000
Phone +55 (0)41 / 30 34 - 81 50
Fax +55 (0)41 / 30 34 - 81 52
info@haefele.com.br

Canada

Häfele Canada Inc.
Burlington, ON L7L 6A8
Phone +1 9 05 / 3 36 66 08
Fax +1 9 05 / 3 19 44 46
info_can@haefeamericas.com

Mexico

Häfele de México S.A.de C.V.
El Marqués, Querétaro, México.
Phone +52 (0)4 42 / 2 96 86 00
Fax +52 (0)4 42 / 2 96 86 20
hmxinfo@mexico@haefele.com.mx

USA

Häfele America Co
Archdale, N.C. 27263
Phone +1 3 36 / 4 34 23 22
Fax +1 3 36 / 4 31 38 31
info_us@haefeamericas.com

Asia

Kazakhstan

Häfele Kazakhstan TOO
050008 Almaty
Phone +7 (727) 376 08 13
Fax +7 (727) 376 09 42
info@haefele.kz

Australia,

New Zealand

Australia
Häfele Australia Pty. Ltd.
Dandenong, VIC 3175
Phone +61 (0)3 / 92 12 20 00
Fax +61 (0)3 / 92 12 20 01
info@haefele.com.au

New Zealand

Häfele (N.Z.) Limited
East Tamaki, Auckland
Phone +64 (0)9 / 2 74 20 40
Fax +64 (0)9 / 2 74 20 41
info@haefele.co.nz

Middle East

Dubai

Häfele GmbH & Co KG
Dubai Representative Office
Dubai/U.A.E.
Phone +9 71 (0)4 / 2 84 44 06
Fax +9 71 (0)4 / 2 86 08 49
info@haefele.ae

Far East

China

Häfele Hardware Technology
(China) Co., Ltd.
101318 Beijing
Phone +86 (0)10 / 80 48 26 86
Fax +86 (0)10 / 80 48 28 85
info_bj@haefele.com.cn

Hong Kong

Häfele GmbH & Co KG
HK Representative Office
Hong Kong
Phone +8 52 / 23 68 64 33
Fax +8 52 / 23 68 99 72
info_hk@haefele.com.cn

India

Häfele India Private Limited
Mumbai 400,042
Phone +91 (0)22 / 66 95 09 20/21
Fax +91 (0)22 / 66 95 09 22
info@haefeleindia.com

Indonesia

P.T. Häfele Indotama
Tangerang 15314
Phone +62 (0)21 / 75 87 88 88
Fax +62 (0)21 / 75 87 77 77
info@haefele.co.id

Japan

Häfele Japan K.K.
Totsuka-ku, Yokohama 244-0806
Phone +81 (0)45 / 8 28 31 17
Fax +81 (0)45 / 8 28 31 13
info@haefele.co.jp

Korea

Häfele Korea Inc.
659 Jinu-ri, Dochuk-myon,
Gwangju-city, Gyeonggi-do
Phone +82 (0)31 / 7 60 76 00
Fax +82 (0)31 / 7 60 76 09
info@haefele.co.kr

Malaysia

Häfele (Malaysia) Sdn Bhd
40150 Shah Alam, Selangor
Phone +60 (0)3 / 55 69 25 26
Fax +60 (0)3 / 55 69 35 26
info@haefele.com.my

Philippines

Häfele Philippines Inc.
Barangay Ususan
Taguig City 1638
Metro Manila
Phone +63 (0)2 / 8 42 33 53
Fax +63 (0)2 / 5 71 36 99
info@haefele.com.ph

Singapore

Häfele Singapore Pte Ltd.
Singapore 729504
Phone +65 / 64 94 74 00
Fax +65 / 64 94 74 01
info@haefele.com.sg

Taiwan

Häfele Taiwan Ltd.
Taipei County 248, Taiwan (R.O.C.)
Phone +8 86 (0)2 / 22 98 00 30
Fax +8 86 (0)2 / 22 98 00 31
info@haefele.com.tw

Thailand

Häfele (Thailand) Limited
57 Soi Sukhumvit 64
Bangkok 10260
Phone +66 (0)2 / 7 41 71 71
Fax +66 (0)2 / 7 41 72 72
info@haefele.co.th

Vietnam

Häfele Vina Co., Ltd.
Ho Chi Minh City
Phone +84 (0)8 / 39 57 31 66
Fax +84 (0)8 / 39 57 31 67
info@haefele.com.vn

Furniture Handles, Wardrobe Hooks



1

Perfect match?

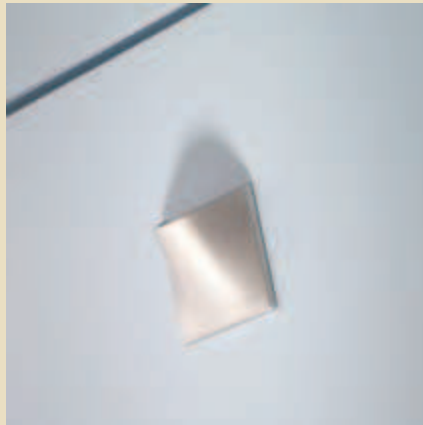
The choices for furniture surface design are unending. The number of different options for combining materials is also infinite. Matt aluminium matches almost all surfaces. Polished or chrome plated handles are a perfect match for dark wood. Let the interplay of contrasts and the combination of shapes and colours inspire you.





It's playtime

Why not have leather handles on furniture, or a glass handle on high-gloss furniture? Or playful shapes for children's furniture? We have compiled a range which suits exotic tastes and encourages playfulness with shapes and materials - without neglecting the functional requirements.



Design Overview



	Page	Page
Furniture handles and knobs		Handle profiles..... 1.154
– Stainless steel..... 1.0		Inset handles 1.155
– Aluminium..... 1.20		Handles for folding sliding doors
– Steel..... 1.21		Glass doors handles
– Brass..... 1.44		Boat style fittings 1.182
– Zinc alloy 1.58		Escutcheon plates
– Wood/Metal..... 1.126		Escutcheons
– Plastic 1.127		Label frames..... 1.183
– Glass..... 1.142		Wardrobe hooks..... 1.196
– Leather..... 1.143		Coat hangers..... 1.197
– Porcelain 1.143		

Furniture Handles and Knobs



Furniture handles	Furniture knobs
– Stainless steel..... 1.2	– Stainless steel..... 1.18
– Aluminium..... 1.22	– Aluminium..... 1.35
– Steel..... 1.36	
– Brass..... 1.46	– Brass..... 1.53
– Zinc alloy 1.62	– Zinc alloy 1.116
– Wood/Metal..... 1.128	– Wood/Metal..... 1.137
– Plastic 1.138	– Plastic..... 1.140
– Glass..... 1.144	– Glass..... 1.146
– Leather..... 1.148	– Leather..... 1.150
– Porcelain 1.152	– Porcelain 1.152

Handle Profiles



Aluminium	1.158
-----------------	-------

Inset Handles/Pull Handles



Stainless steel	1.163
Aluminium	1.166
Steel.....	1.169
Brass.....	1.170
Zinc alloy.....	1.173
Plastic	1.180

Handles for Sliding Folding Doors



Handles for sliding folding doors	
– Zinc alloy	1.184
Adapter for sliding folding doors	
– Zinc alloy	1.185

Glass Doors Handles



Stainless steel	1.186
Brass.....	1.186
Zinc alloy.....	1.188

Boat Style Fittings, Escutcheon Plates/Escutcheons, Label Frames Page



Boats style fittings, metal	1.189
Escutcheon plates, metal	1.190
Escutcheons	
– Metal	1.191
– Zinc alloy	1.192
Label Frames, metal and plastic	1.193

Wardrobe Hooks



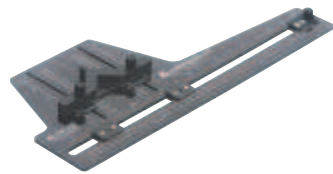
Wardrobe hooks		Wardrobes	
– Stainless steel.....	1.201	– Stainless steel.....	1.198
– Aluminium.....	1.204	Wardrobe rack	
– Steel.....	1.206	– Stainless steel.....	1.201
– Brass.....	1.207		
– Zinc alloy	1.208		

Coat Hangers



Coat hangers	
– Stainless steel.....	1.214
– Steel.....	1.215

Mounting Aids, Fixing Material



Mounting aids.....	1.195
Fixing material	1.216

Indexes



Index by product types..... see annexe, Page A.0



Index by Cat. Nos. with page references see annexe, Page A.2



1

Stainless steel



Page 1.2 **NEW**



1.2 **NEW**



1.2 **NEW**



1.3 **NEW**



1.3 **NEW**



1.3 **NEW**



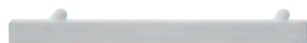
1.4 **NEW**



1.4 **NEW**



1.4 **NEW**



1.13



1.6



1.6



1.7 **NEW**



1.7 **NEW**



1.8



1.9



1.9



1.10 **NEW**



1.10 **NEW**



1.11 **NEW**



1.5 **NEW**



1.11 **NEW**



1.5



1.5



1.8



1.12



1.12



1.13



1.14 **NEW**



1.14



1.14



1.15

DGH-M-INT 2008; HDE; 12/07; Dimensional data not binding. We reserve the right to alter specifications without notice.



Stainless steel



Page 1.15



1.16



1.16



1.17



1.17



1.12



1.18



1.18



1.18



1.19



1.19



1.19



1.19 **NEW**



1.18



1.18



1.18



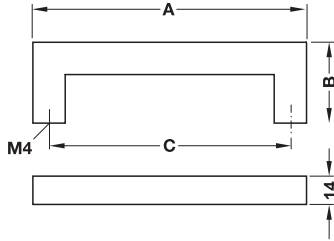
1.19 **NEW**



1.19

DGH-M-INT 2008, HIDE, 12/07; Dimensional data not binding. We reserve the right to alter specifications without notice.

1

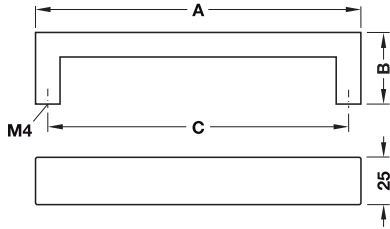


- Material: Stainless steel, quality 1.4301
- Finish: Matt brushed

Dim. A mm	Dim. B mm	Dim. C mm	Cat. No.
142	40	128	100.45.061
174	40	160	100.45.062
206	40	192	100.45.063
238	40	224	100.45.064
302	40	288	100.45.066
334	40	320	100.45.067

Packing: 50 pieces

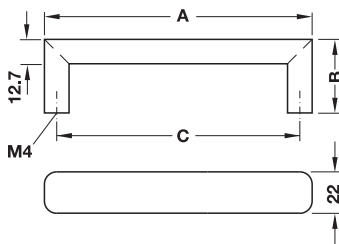
DGH-M-INT 2008, HDE, 12/07; Dimensional data not binding. We reserve the right to alter specifications without notice.



- Material: Stainless steel, quality 1.4301
- Finish: Matt brushed

Dim. A mm	Dim. B mm	Dim. C mm	Cat. No.
141	38	128	100.48.051
173	38	160	100.48.052
205	38	192	100.48.053
237	38	224	100.48.054
301	38	288	100.48.056
333	38	320	100.48.057

Packing: 40 pieces



- Material: Stainless steel, quality 1.4301
- Finish: Matt brushed

Dim. A mm	Dim. B mm	Dim. C mm	Cat. No.
140	39	128	100.52.001
204	39	192	100.52.003
332	39	320	100.52.007

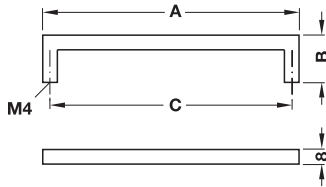
Packing: 50 pieces

DGH-M-INT 2008, HDE, 12/07; Dimensional data not binding. We reserve the right to alter specifications without notice.

M4 threaded screws

► MB 1.216

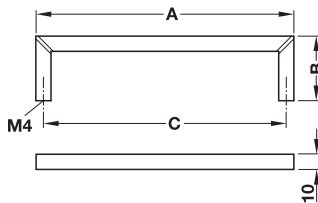
1



- Material: Stainless steel, quality 1.4301
- Finish: Matt brushed

Dim. A mm	Dim. B mm	Dim. C mm	Cat. No.
104	25	96	100.56.001
136	25	128	100.56.002
168	25	160	100.56.003
200	25	192	100.56.004
232	25	224	100.56.005
264	25	256	100.56.006
296	25	288	100.56.007
328	25	320	100.56.008

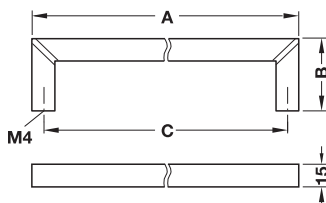
Packing: 10 pieces



- Material: Stainless steel, quality 1.4301
- Finish: Matt

Dim. A mm	Dim. B mm	Dim. C mm	Cat. No.
170	34	160	100.51.003

Packing: 5 pieces



- Material: Stainless steel, quality 1.4301
- Finish: Matt

Dim. A mm	Dim. B mm	Dim. C mm	Cat. No.
239	44	224	100.51.025

Packing: 5 pieces

M4 threaded screws

► MB 1.216

DGH-M-INT 2008, HDE, 1207; Dimensional data not binding. We reserve the right to alter specifications without notice.